



DISMON VERSATILE DIAGNOSTIC TOOL



DESCRIPTION

DISMON is a state-of-the-art tool drawing on 30 years of experience in the maintenance and development of ŠELC products within the Škoda Group. It is the ideal tool for maintenance technicians, testing, service, and certification specialists, as well as for software and hardware product developers, and designers

of power converters and entire road and rail vehicles. DISMON is fully compatible with the Microsoft Windows operating system (from version 10 onwards) and has been penetration tested in accordance with UN Regulation R155.

EXTENSIVE FUNCTIONALITY AND KEY FEATURES

REAL-TIME TUNING

Enables real-time monitoring and adjustment of parameter values, including graphical display and data export.

GPS SUPPORT

Supports the display of the vehicle's position on a map (for vehicles equipped with GPS).

DIAGNOSTICS

Full access to the vehicle's diagnostic memory and event log, with graphical attachments.

PARAMETER SETTINGS

Allows the configuration of control algorithm parameters for converters and vehicles.

SOFTWARE UPDATES

A dedicated tool for updating the software of vehicle control units manufactured by ŠELC.

HARDWARE AND SOFTWARE INFORMATION

Allows you to view information on the hardware and software configuration of vehicles, which is a requirement of vehicle configuration management.

MAINTENANCE SUPPORT

Extensive service and maintenance support thanks to detailed instructions and procedures for the effective maintenance of converters and vehicles.

WIDE-RANGING CONNECTIVITY

Support for common interfaces such as Ethernet, RS232 and CAN.

LOCALISATION

The programme's user interface supports the world's major languages, with the option to add further language versions.

SECURITY AND ACCESS CONTROL

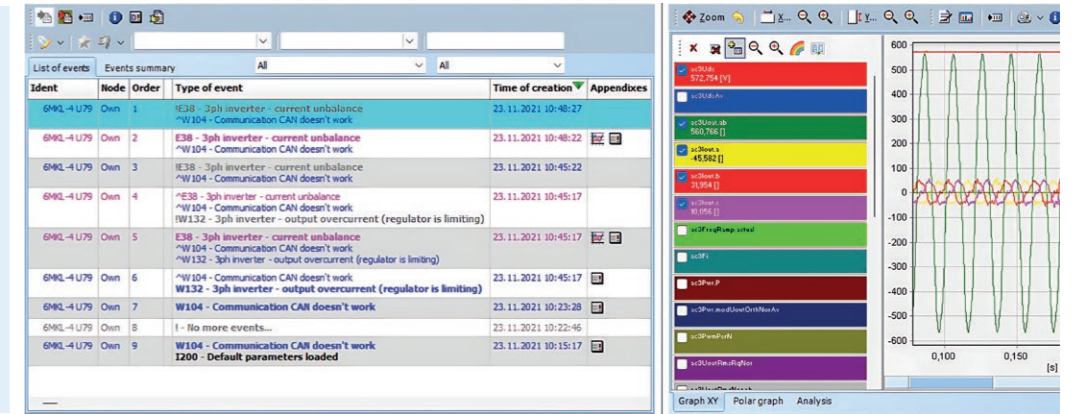
Communication with vehicle electronic control units is protected in accordance with the requirements of the IEC 62443 standard and UN R155. Security is ensured through user authentication, access keys and asymmetric data encryption.

CUSTOMER REQUIREMENTS

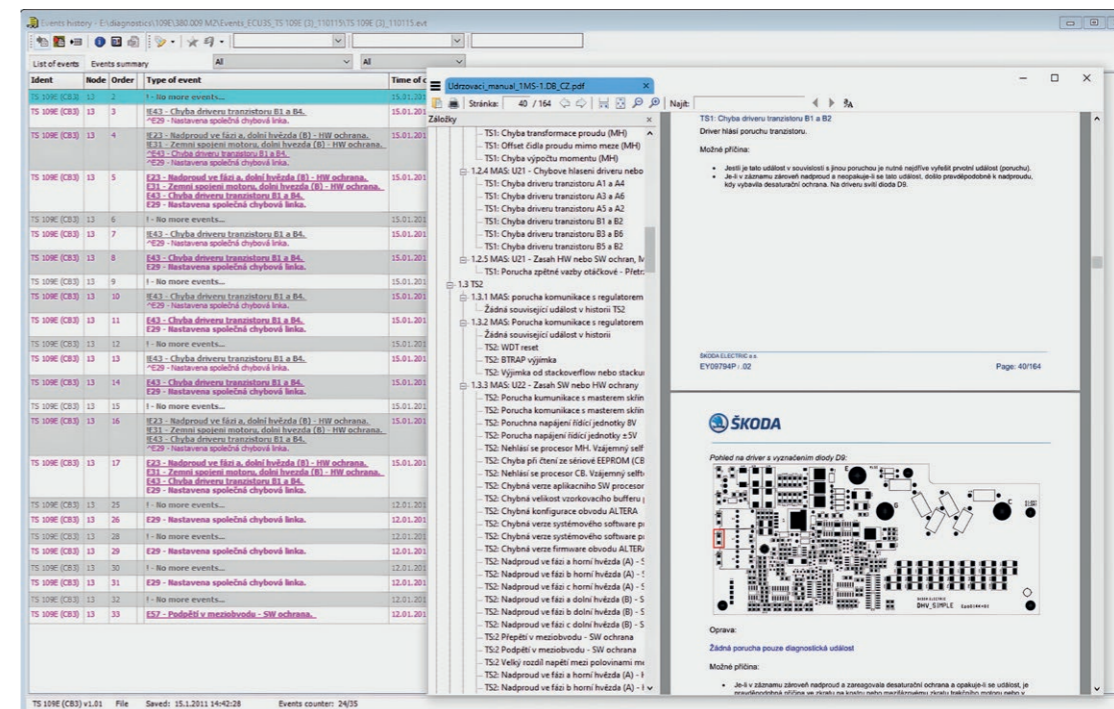
The option to add and extend the tool's functions via a paid service.

HISTORY OF DIAGNOSTIC EVENTS

During a service visit, the technician can easily view the vehicle's diagnostic event history, open the attached files for each event containing values and waveforms.

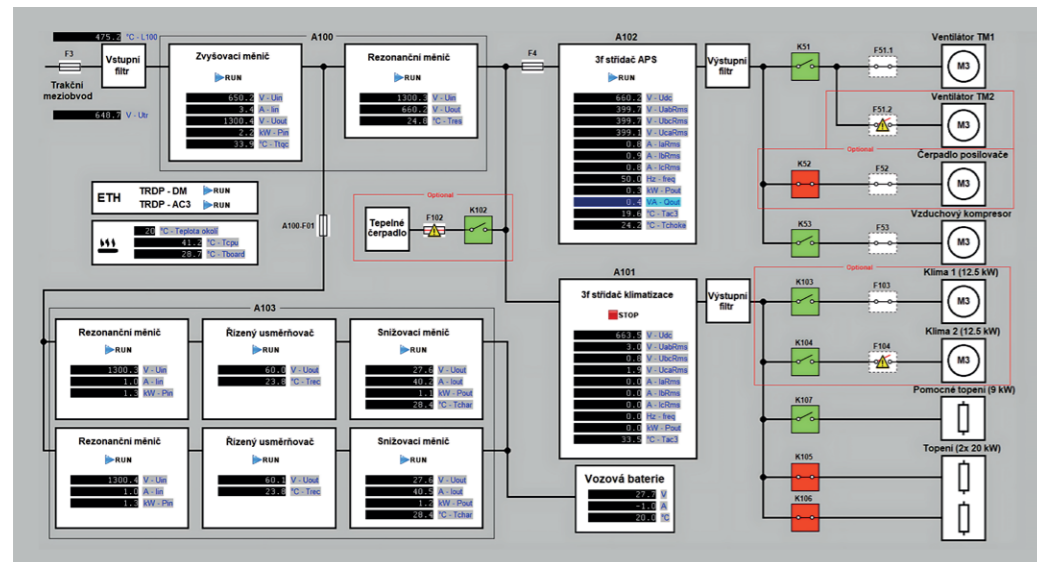


FOR MOST PRODUCTS, IT IS POSSIBLE TO VIEW THE TROUBLESHOOTING GUIDE WITH A SINGLE CLICK



Quick access to troubleshooting guides saves time and increases service efficiency.

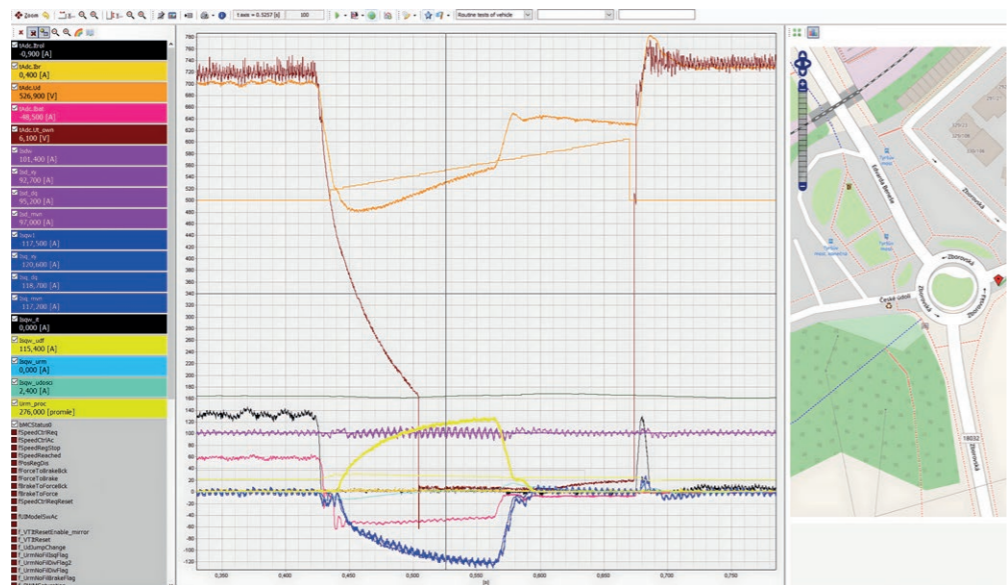
VEHICLE DIAGRAM WITH REAL-TIME DISPLAY OF PARAMETERS



The measured values can be displayed in an easy-to-read graph, which makes it easier for technicians to understand the situation.

GRAPHICAL REPRESENTATIONS OF VARIABLES

The measured values can be displayed in an easy-to-read graph. The technician can highlight and annotate interesting sections and share the file - including the comments - with colleagues. For a selected section of the graph, the vehicle's location on the map can also be displayed.



FURTHER BENEFITS OF DISMON

SECURITY
Communication and data protection in accordance with the latest security standards



GLOBAL SUPPORT
A multilingual environment with the option to add further languages



FLEXIBILITY
Option to extend functionality to meet specific customer needs

EFFICIENCY
Faster diagnostics, less downtime, happier customers



ŠKODA GROUP SUPPORT
The Škoda Group's experience, know-how and long-term support



Škoda Group
skodagroup.com
© 2026

